

Long Live Your John Deere Combine

Add more value with advanced technology, retrofits and attachments.



Shape the future of your machine.

Add life to your combine with a combination of advanced technology, cutting-edge retrofits and versatile attachments from John Deere – all designed to make your machine work smarter, your job easier, and your operation more profitable.

Imagine the impact **RowMax™** could make. This new retrofit solution boosts row unit life by up to 50 percent – allowing you to significantly enhance your combine for many harvests to come. Or think for a moment about **Stalk Rolls**, offering you three uniquely engineered processing options for various harvest conditions. And now picture how an **ActiveYield™** retrofit kit could assist you in optimizing system accuracy with reliable yield data.

Of course a better version of your current combine doesn't end there. From cornhead to residue management – along with every functional area in-between – you can enhance your harvest by paging through this comprehensive brochure to uncover innovations that can shape the future of your machine.

To learn even more about combine technology, retrofits and attachments, talk to us today!

JohnDeere.com
JohnDeere.ca



High Moisture Kits

To minimize the chance of kernel damage when harvesting high-moisture corn (greater than 25 percent moisture), an insert can be installed in the auger floor to close the gap between the floor and the auger flighting. While not required for use with the insert, a height adjustment kit can be installed to provide a lower auger position for even greater grain quality.

Part numbers and applications:

Auger Floor Insert

BXE10960	606C, 706C Series (6-Row 30")
BXE10962	608C, 708C Series (8-Row 30")
BXE10964	612C, 712C Series (12-Row 20")
BXE10965	612C, 712C Series (12-Row 22")
BXE10966	612C, 712C Series (12-Row 30")
KXE 10428	612FC, 712FC Series (12-Row 30")
BXE 10967	616C, 716C Series (16-Row 30")
BXE 10968	618C, 718C Series (18-Row 20")
BXE 10969	618C, 718C Series (18-Row 22")

Auger Height Adjustment Kit

BXE 10973	606C, 608C, 706C, 708C (PIN -805, 000)
BXE 10974	612C, 616C, 618C, 712C, 716C, 718C (PIN -805,000)



RowMax™

Designed exclusively for the 700C/FC corn heads — and available as a retrofit for MY12-17 600C/FC corn heads — RowMax boosts row unit life by up to 50% with an advanced gathering chain featuring 12 additional links, two more sprocket teeth, and upgraded solid alloy bushings. Additionally, by replacing worn stalk rolls with opposed or intermeshing stalk rolls, wear life will improve by 25% thanks to an improved wear coating. *(KXE10528 metal guide kit required for installation.)*

Part numbers:

KXE10487	Row/Max Kit
HXE110671	LH Opposed Stalk Roll
HXE110672	RH Opposed Stalk Roll
HXE110675	LH Intermeshing Stalk Roll
HXE110676	RH Intermeshing Stalk Roll



Corn Head Shoe Cover

Polyethylene corn head shoe covers provide a smooth surface to help prevent trash buildup and bunching in damp conditions. Featuring a fluorescent strip that offers better visibility at night (and in downed corn or narrow rows), shoe covers simply snap into place.

Part number and applications:

H207895	40, 90 and 600 Series Corn Heads with Perma-Glide points
---------	--

CORNHEADS



Stalk Rolls

Regardless of harvesting conditions or residue processing needs, John Deere has the right stalk roll solution for your 600 Series Corn Head. With three uniquely engineered options, you can readily adapt your corn head to the situation at hand. Stalk rolls include:

- 1 Straight Fluted**
slow residue breakdown
- 2 Opposed Knife Rolls**
moderate stalk processing for dry corn
- 3 Intermeshing Knife Rolls**
aggressive stalk processing for moist corn

For details and pricing on stalk roll solutions, contact us today.



600 Flex Header Height Sensors (Rigid Mode)

The height-sensing bundle (suited for 620F, 622F, 625F, 630F and 635 HydraFlex™ Platforms) adapts ground-contacting sensors when the flex cutterbar is locked into the rigid position. Use with 50, 60, 70 and S Series Combines.

Part number and application:

BXE10119 MY10 and newer 600 Series Flex Platforms

Reel Tine Flip Over Kit

Reduce wrapping of crop material – and increase front draper visibility – with a reel tine flip over kit. Manufactured specifically for tough vine crops, this new kit improves productivity when harvesting soybeans, peas, straight-cut edible beans and canola.

Part numbers and applications:

BXE10262	625D, 630D, 635D (MY08-16) and 630FD, 635FD (MY12-15)
BXE10263	640D (MY08-16) and 640FD (MY12-16)
BXE10760	630FD and 635FD (MY16-)
BXE10761	640FD and 645FD (MY16-)
BXE10873	625D, 630D, 635D (MY17) and 725D, 730D, 735D (MY18-)
BXE10874	640D (MY17) and 740D (MY18-)



Fine-Tooth Sections



No-Till Sections



Coarse-Tooth Sections

Sections

Engineered for maximum performance, John Deere sickle sections offer many important benefits including:

- Tapered tips and consistent serrations to maintain sharpness
- Anti-buildup zones to reduce clogging and increase capacity
- Innovative breakage zones to allow the section to break – instead of bend – without damaging guards and reducing overall cutterbar weight
- Austempering heat treatment to provide both strength and balanced wear to the entire section

Section Recommendations

Fine-Tooth Sections: small grains

Coarse-Tooth Sections: green-stemmed crops like soybeans

No-Till Sections: prevents corn stalks from pinching

Part numbers and applications:

H153329	Fine-Tooth 600 Series (4" Cutting Systems Dura-Twin Sections)
H163131	Coarse-Tooth 600 Series (4" Cutting Systems Dura-Twin Sections)
H215025	Fine-Tooth 600 Series (4" Cutting Systems No-Till Sections Short/Long)
H215064	Coarse-Tooth 600 Series (4" Cutting Systems No-Till Sections Short/Long)

Wide Reel Finger

Snap-on wide reel fingers – which are wider and more rigid than traditional reel fingers – are designed to improve sweeping action on short or light crops. In addition to reducing material buildup on the cutterbar, wide reel fingers also feature angled, pronged edges for improved crop spearing.

Part number:

H207933 Full bat reel fingers 10-pack (4 in./101.6 mm or 6 in./152.5 mm width)



Guards

Only replacing knives is like sharpening just one side of your scissors. A dull edge on guards can sacrifice cut quality and potentially slow down operations ... costing acres per hour.

John Deere offers green, high-wear guards – standard from the factory – that are treated with an additional boronization process to increase wear life by twofold. Black guards, although not as durable as green guards, are case hardened all the way around and provide longer wear life than aftermarket guards that are only induction hardened at the corners of the cutting edge. Use the following guidelines when choosing a cutting system for primary crops:

- **Long-Point Guards & Fine Tooth Sections:** small grains
- **Blunt-Point Guards & Coarse-Tooth Sections:** soybeans
- **No-Till Sections & Guards:** prevent corn stalks from hairpinning

Part numbers and applications:

H213508	Black Standard (Short-Long-Short) 600 Series Long Point (Small Grains)
H213405	Black Standard (Long-Short-Long) 600 Series Long Point (Small Grains)
H229540	Green, High Wear (Short-Long-Short) 600 Series Long Point (Small Grains)
H229539	Green, High Wear (Long-Short-Long) 600 Series Long Point (Small Grains)
H213507	Black Standard (Short-Long-Short) 600 Series Blunt Point (Coarse Grains)
H213398	Black Standard (Long-Short-Long) 600 Series Blunt Point (Coarse Grains)
H229538	Green, High Wear (Short-Long-Short) 600 Series Blunt Point (Coarse Grains)
H229537	Green, High Wear (Long-Short-Long) 600 Series Blunt Point (Coarse Grains)
H218701	Green, High Wear (Short-Long-Short) 600 Series No-Till Blunt Point (Coarse Grains)
H218702	Green, High Wear (Long-Short-Long) 600 Series No-Till Blunt Point (Coarse Grains)



Long-Point Guards



Blunt-Point Guards



No-Till Guards

PLATFORM

Crop Feeding Enhancements

Feed Drum Anti-Wrap Kit: Recommended for tall and damp crop conditions to reduce drum wrapping, the attachment consists of two brackets that mount near the outer edge of the feed drum.

Part numbers and applications:

BXE10736	600D Series
BXE10039	600FD Series (-764999)
BXE10408	600FD Series (765000-)

Center Section Seal Kit: Minimizes grain loss when direct-cutting canola and can be utilized for other small grain crops with up to 45 percent decrease in losses from the center feed section compared to previous models.

Part number and applications:

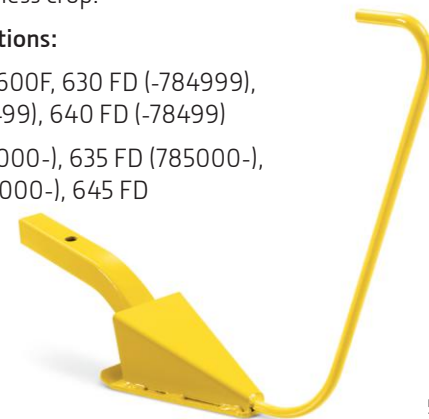
BXE10851	600D, 700D Series
----------	-------------------

Crop Dividers

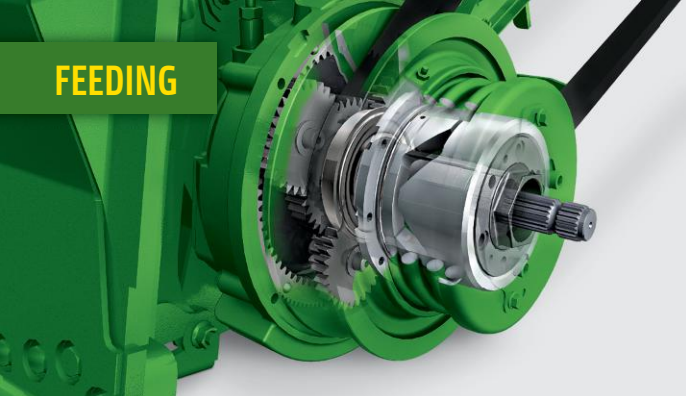
Short crop dividers – a direct replacement for long crop dividers – are recommended for small grains and standing drilled beans because they knock down less crop.

Part numbers and applications:

AH147232	900, 900F, 600F, 630 FD (-784999), 635FD (-78499), 640 FD (-78499)
KXE10397	630FD (785000-), 635 FD (785000-), 640FD (785000-), 645 FD



FEEDING



High-Torque Variable-Speed Feederhouse Drive*

Get the higher-capacity drive power you need to harvest high-yielding corn at faster ground speeds. Compared to standard heavy-duty variable feederhouse drives, this heavy-duty drive offers stronger belts and larger gears along with more durable shafts and bearings.

Part number and applications:

BH84447 9660, 9760, 9860, 9670, 9770, 9870, S660, S670, S680 and S690

**Not for use with 612 StalkMaster™ Corn Head. Combine must be equipped with heavy-duty feederhouse drive.*



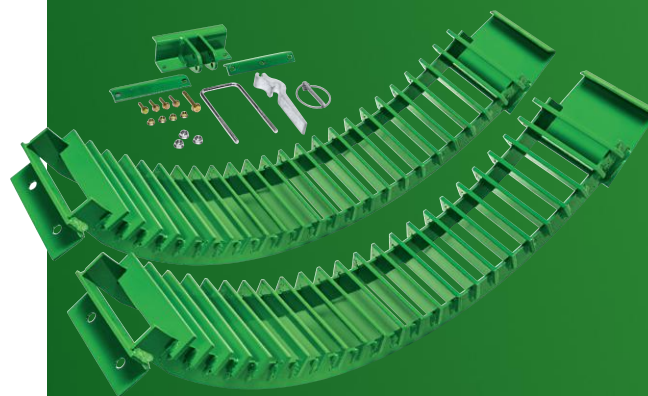
Feed Accelerator Slow Speed Kit

Recommended for use in food corn, popcorn and edible beans when optimum grain quality is desired. Lower speeds enable the feed accelerator to provide gentler grain handling in delicate specialty crops.

Part numbers and applications:

BH81691 50, 60, 70 and S600 (-785000) Series

BXE10741 S600 (785000-) and S700 Series



Concave Insert Bars

Concave inserts provide the additional threshing action required for harvesting small grain with the round-bar/multi-crop concaves.

Part numbers and applications:

BH84308 9660, 9760, 9860, 9670, 9770, 9870, S650, S660, S670, S680, S690 and S700 Series

BH84294 9560, 9570 and S550

Concave Cover Plates

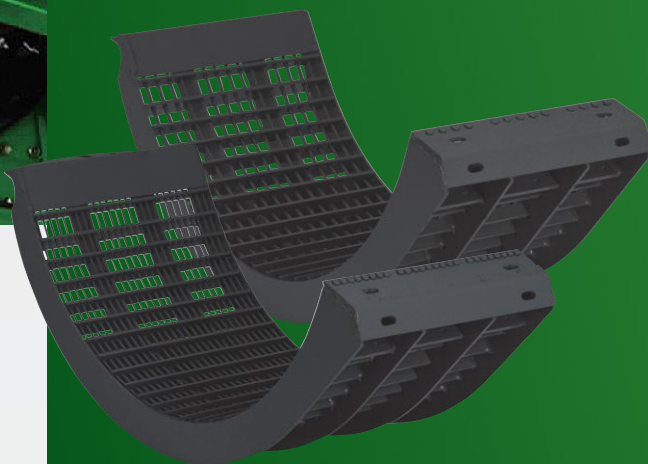
Plates reduce uneven distribution of chaff and grain into the conveyor augers under the concave in dry, brittle straw conditions. Additionally, they cover the front open portion of small-wire/small-grain concaves or the large-wire concaves for added threshing capability in hard-to-thresh cereal grain crops.

Part number and applications:

BH84534 9660, 9760, 9860, S660, S670, S680, S690, and S700 Series

Extended Wear Concaves

Extend the life of your concaves with boronized cross bars, which maintain sharp 90-degree corners for longer time periods than standard heat-treated concaves.



Part numbers:

Extended Wear Small-Wire

BXE10389 Set of 3 including:
(1) AXE28960 Front
(2) AXE28961 Middle and Rear

Extended Wear Large-Wire

BXE10391 Set of 3 including:
(1) AXE28965 Front
(2) AXE28966 Middle and Rear

Extended Wear Round Bar

BXE10387 Set of 3 including:
(1) AXE28955 Front
(2) AXE28957 Middle and Rear

Applications: 9650, 9750, 9660, 9760, 9860, 9670, 9770, 9870, S650, S660, S670, S680, S690 and S700 Series



High-Wear Rifled Threshing Elements*

High-wear rifled threshing elements are coated with Gopalite™ for better wear and corrosion resistance – making them ideal for abrasive crops including rice, edible beans, high-yield irrigated crops and hard-to-thresh crops.

Applications:

9650, 9750, 9660, 9760, 9860, 9670, 9770, 9870, S660, S670, S680, S690 and S700 Series

**Combines equipped with TriStream™ rotor.*



High-Wear Separator Tines

Ideal for tough, abrasive conditions, high-wear separator tines feature a patented Gopalite™ coating to provide a thicker wear layer – and hardness greater than chrome – for improved durability and corrosion resistance.

Applications:

9650, 9750, 9660, 9760, 9860, 9670, 9770, 9870, S660, S670, S680, S690 and S700 Series



Rotor Discharge Flights

Available for STS and S-Series combines when operating in specialty crops, discharge flights provide an aggressive push to slow-moving crop material as it passes from the rotor housing into the discharge beater. The added kick from the flight paddle design significantly improves material flow and reduces potential plugging at the rear of the rotor at extremely low threshing speeds.

Part number and applications:

BH84581	9650, 9750, 9660, 9760, 9860, 9670, 9770, 9870, S660, S670, S680, S690 and S700 Series
---------	--



Separator Grate Covers

Reduce chaff load to the cleaning shoe when harvesting very dry small grain.

Part number and applications:

BXE10645	9650, 9750, 9660, 9760, 9860, 9670, 9770, 9870, S660, S670, S680, S690 and S700 Series
----------	--

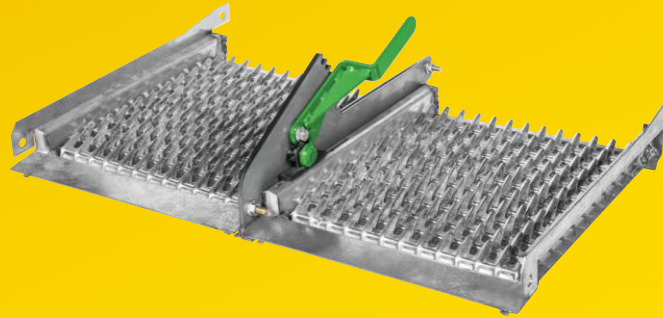


Deep Tooth Chaffer and Sieve

The longer louver design of the chaffer and sieve feature a larger opening for increased grain-capturing capacity, especially in high-yielding corn or when harvesting on slopes where the larger louver opening of these elements can help to increase cleaning-shoe capacity. The deep-tooth chaffer and sieve come in a pair only.

Applications:

50, 60, 70, and S- Series



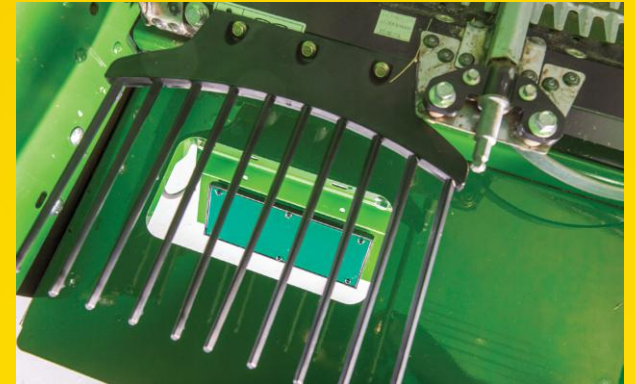
Adjustable Front Chaffer

Allows the operator to manually open/close the raised front chaffer elements on the raised center front chaffer (pre-cleaner) depending on crop conditions. Additionally, airflow and material buildup can be reduced. Recommended for crops with dense green stalks like straight cutting canola.

Part numbers and applications:

AXE13768 60, 70 and S600 (-785000) Series

BXE10692 S600 (785001-) and S700 Series

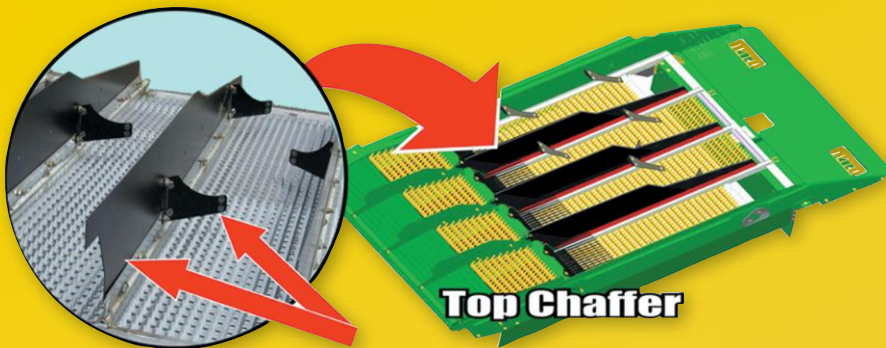


Cleaning Shoe Finger Kit

New improved fingers help resolve plugging of the shoe grain loss sensors.

Part number and applications:

KXE10495 S600 (785001-) Series



STS Sidehill Performance Kit

Designed for harvesting on slopes up to 8 degrees (or 14%), the STS sidehill performance kit reduces cleaning shoe grain loss to enhance overall combine performance. Included in the kit are chaffer dividers and grain agitators to promote balanced grain distribution over the full width of the chaffer.

Part numbers and applications:

BH84391 9650, 9750, 9660, 9760, and 9860

BH84524 9670, 9770, and 9870

BXE10076 S650, S660, S670, S760, and S770

BXE10077 S680, S690, S780, and S790



Grain Tank Trough Liners

Eliminate grain loss – due to holes under your grain tank augers – with stainless steel trough liners, which extend the life of your combine and make your operation more profitable over the long haul.

Part numbers and applications:

AH168093	9000, 9010, 9050 and 9060 Series Walker Combines and CTS Combines
AH202864*	9650, 9750, 9560, 9660, 9760, 9570 and 9670 STS Combines

**Not for use on high unloading rate systems*



Additional Grain Tank Sensor

With an additional grain tank sensor, you'll know at a moment's notice when the combine grain tank is full. Mounting hardware and clamps are included.

Part numbers and applications:

BH78464	9450 and 9550; 9550 Sidehill; 9560 and 9650 CTS; 9660 CTS; and 9660 Combines
BH81598	9650, 9750 and 9060 Series STS; and 9070 Series STS Combines
BXE10270	S600 and S700 Series



Unloading Auger Boot

The unloading auger boot on newer model combines is now available as a retrofit for all high-unloading rate systems (3.2/3.8 bu. per second) regardless of model. This one-piece design extends amount of time to blowoff, adds 9 inches of reach and reduces overall downtime.

Part number and application:

HXE71069* All HUR (3.2/3.8 bps) unloading systems

**Boot height clearance will vary depending on auger length.*



ActiveYield™ Retrofit Kit

ActiveYield renders quality yield data by measuring grain weight in the grain tank as it fills. Combines utilize the weight information to continually calibrate yield systems throughout harvest to provide operators optimized system accuracy and reliable yield data.

Part numbers and applications:

BXE10503	MY12-MY-15 S-Series Combines
BXE10797	MY16- S-Series Combines



Conveyor Auger Bearing Kits

Conveyor auger bearing kits offer a sturdier auger bed bulkhead and stronger bearing mounts than previous models. Featuring an additional bearing mount that delivers cross-shaft support, the kit also includes removable bearing plates so you can easily access your conveyor auger bearings.

Part numbers and applications:

KXE10350	Wide-body STS Combines
KXE10351	Narrow-body STS Combines



Unloading Auger Charge Housing Repair Kit

With this repair kit you can eliminate costly grain loss due to holes underneath the unloading auger charge housing. In addition to maximizing your combine's grain intake, the stainless steel liner extends the service life of the charge housing.

Part number and applications:

AH207779*	9000, 9010, 9050 and 9060 Walker Combines; CTS Combines; and 9650, 9750, 9560, 9660, 9760, 9570 and 9670 STS Combines
-----------	---

**Not for use on high unloading rate systems.*

RESIDUE MANAGEMENT



See us today to set up the right residue management system for your operational needs.

Residue Management Systems

Residue management systems from John Deere are tailored to meet the specific agronomic requirements of your operation. Offering greater versatility for both sizing and distribution, you'll be well equipped to adjust to your unique conditions.

Two of the most effective residue management products from John Deere's broad line of kits and solutions include:

Extra-Wide Straw Spreader Kit

Spread wider – up to 40 ft./12.2 m – by converting your standard straw spreader to hydraulically driven twin disks. Two large impellers ensure uniform, wide distribution of material from the separator and cleaning system.

PowerCast™ Tailboard

Offering complete tailboard assembly that mounts to the rear of the chopper, you can easily adjust your spread width from 35 to 50 ft. (10.6 to 15.2 m) right from your cab. PowerCast™ tailboard replaces 12-vane tailboard to better manage residue distribution with wider platforms.



In-Cab Mobile Suction Mounted Device

With the new suction cup RAM™ kits, John Deere delivers the most versatile and portable mobile device mounting solutions yet. The twist-lock design creates the strongest hold possible in comparison to regular suction cups. Once the mount is placed in position, simply twist the lever to lock in the long-lasting hold.

Both cell phone and tablet kits are available so you can easily move mobile devices from tractor to combine to personal vehicles.

Part numbers:

BXE10606 Cell Phone Suction Cup Kit
BXE10607 Tablet Dual Section Cup Kit

Bluetooth® Microphone Kit

Retrofit kit improves Bluetooth microphone that fits MY14-MY16 cabs.

Part number:

KXE10453 Bluetooth Microphone Kit



Bluetooth® is a registered trademark.



Foot Pegs

Improve operator comfort with this simple upgrade. Foot pegs can be installed on all S-Series Combines going back to MY12.

Part number:

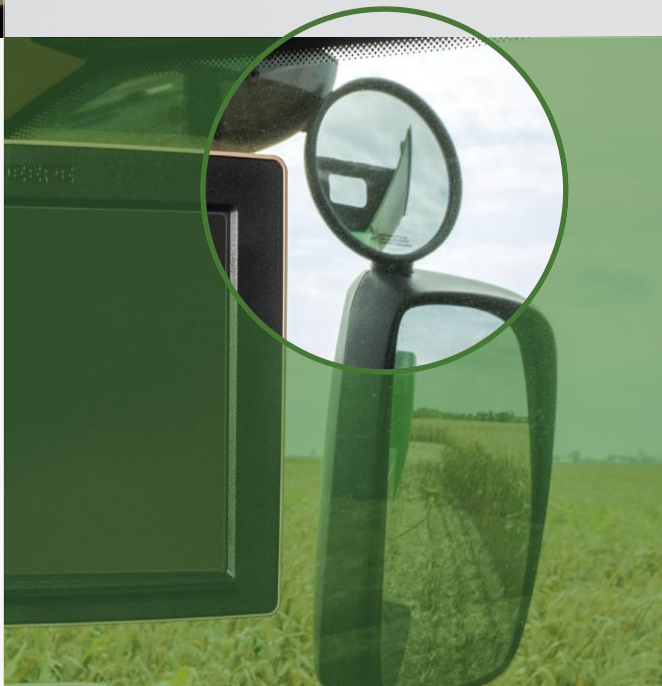
KXE10454 Foot Pegs

Grain Tank Mirror Kit

Add grain tank mirrors to any S-Series Combine to increase grain tank visibility.

Part number:

KXE10458 Grain Tank Mirror Kit



iPhone® and iPad® are registered trademarks of Apple Inc.

In-Cab Mobile Device Mounting

Enjoy hands-free access and improved viewing of your iPad®, iPhone®, or other mobile device from the seat of your cab. Mounting brackets are adjustable, providing easy access without interfering with visibility or machine controls.

Part numbers and applications:

BXE10481	Guide Bar (MY12-MY13 S600 Series)
BXE10927	Guide Bar (MY14-MY17 S600 Series)
BXE10480	Slide Kit (MY12-MY17 S600 Series)
BXE10479	Tablet Mount (MY12-MY17 S600 Series)
BRE10015	Cell Phone Mount (MY12-MY17 S600 Series)
BXE10901	9-10 in. Tablet Mount (S700 Series)
BXE10864	11-12-in. Tablet Mount (S700 Series)



SiriusXM® is a registered trademark.

SiriusXM® Antenna Kit

Antenna offers compatibility with all SiriusXM-ready harvesting cabs starting in MY18.

Part number:

KXE10497 XM Antenna Kit



Put It On My Multi-Use Account...

And an easy alternative to cash
that allows me to pay for the

SERVICE

I need to avoid downtime

With the flexibility to add
a variety of John Deere

ATTACHMENTS

that help me increase efficiency
and productivity

For convenient financing
of genuine John Deere

PARTS

at my local dealership



The **Multi-Use Account** from John Deere Financial is an essential financing solution that provides an additional source of capital, matches my cash flow and helps me get the important things I need to keep my business moving forward — all season long.

Learn more about the full potential of your account at **MyMultiUseAccount.com**

CROP INPUTS | FARM SUPPLIES | PARTS, SERVICE & ATTACHMENTS



JOHN DEERE
FINANCIAL

Multi-Use Account

Multi-Use Accounts are a service of John Deere Financial, f.s.b.
CR0314784

DSPB73607 Litho in U.S.A. (18-07)